

## LET'S DO BUSINESS

It's our business to make your business offsite run perfectly. No other meeting has exactly your requirements, and no other venue will match them like penta. We take it personally.



### DAY DELEGATE PACKAGE "PENTA"

- Main meeting room rental
- Relaxing morning break
- Quick-Lunch
- Relaxing afternoon break
- Equipment (conference kit, flipchart, pinboard, notepads & pencils, screen)
- Unlimited mineral water in the main meeting room and during lunch



### DAY DELEGATE PACKAGE "PENTA PLUS"

- Main meeting room rental
- Relaxing morning break
- 3 course lunch menu or lunch buffet\* with 3 main courses available
- Relaxing afternoon break
- Equipment (conference kit, flipchart, pinboard, notepads & pencils, screen)
- Unlimited mineral water and fruit juices in the main meeting room and during lunch
- Unlimited soft drinks during lunch and breaks
- LCD projector
- Laser pointer

The prices listed are subject to availability, and may vary depending on the time of year and number of bookings. Rates are applicable to a minimum of 10 persons. All prices listed include VAT and a service charge. In the event of a rise in the statutory VAT rate, the prices will be adjusted accordingly. The above-mentioned conditions will cease to apply following the issue of any new price list. Subject to change without notice.

\* From 30 persons

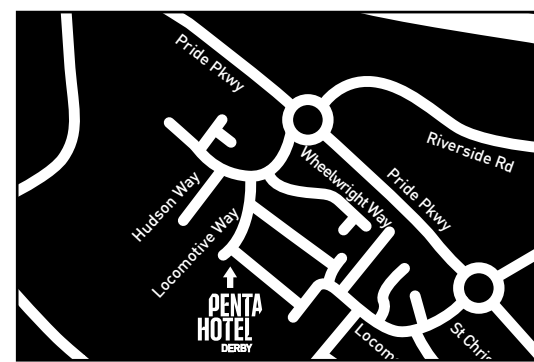
## PENTAFACTS DERBY

- 112 rooms
- 3 conference rooms / 70 people
- 112 parking spaces
- pentalounge open 24 h
- free and premium WIFI available
- Fitness / gym
- free Pay-TV
- free billiards & latest game console

## LOCATION

- East Midlands Airport 21 km (EMA)
- Central station 0 km
- City centre 1 km

## CONTACT



pentahotel Derby  
Locomotive Way/Pride Park · Derby DE24 8PU  
T: +44 (0) 1332 376 420 · F: +44 (0) 1332 376 445  
info.derby@pentahotels.com



# PENTAHOTEL



## DO IT RIGHT. DO IT DERBY STYLE.

We've got the facilities and the can-do attitude at penta Derby to turn your business meeting or offsite into a dream event. Don't settle for alright when fantastic is just an enquiry away. Get in touch with us. We're here to help.





## WORK, PLAY, COMPETE

We're good at blurring the lines between business and leisure. Call it a penta philosophy: add relaxation to work and a little tension to fun. It makes for great results.

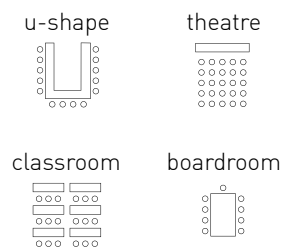
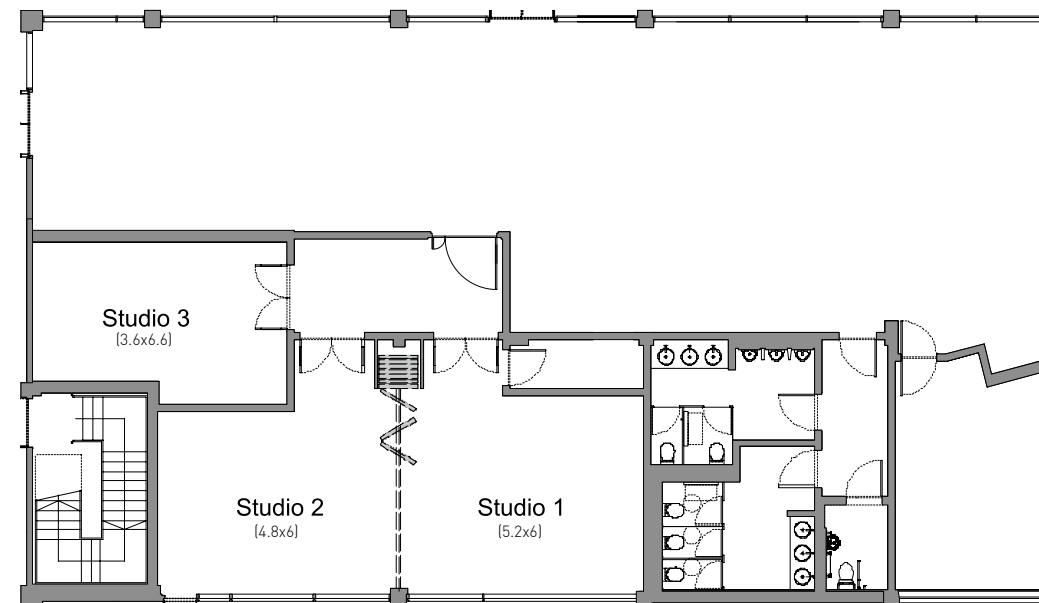


OF COURSE WE MAKE SURE  
IT'S YOUR PERFECT EVENT -  
IT'S OURS TOO.



## SPACE TRAVELLERS

A room of one's own. Complimentary Sky TV, Premier League, large flatscreen, free and premium WIFI... all in your own designer-styled room by Matteo Thun. That, dear guest, is unwinding the penta way.



		u-shape	theatre	classroom	boardroom
STUDIO 1	(28.00 m <sup>2</sup> )	14	35	14	14
STUDIO 2	(28.00 m <sup>2</sup> )	14	30	14	14
STUDIO 1+2	(56.00 m <sup>2</sup> )	28	70	28	28
STUDIO 3	(23.00 m <sup>2</sup> )	12	18	12	12



## APRÈS BUSINESS...

You are our guest. We think about your comfort a great deal more than you'd imagine. If you know our pentalounge, you know we mean it. Style and relaxation have never collided so elegantly. Go ahead, unwind. Utterly.



## APPETITE FOR EXCELLENCE

Quality input means quality output, and what business runs on an empty stomach? We certainly don't. That's why we use quality ingredients, like the prime graded USDA beef in our burgers and steaks. We don't think you want less.